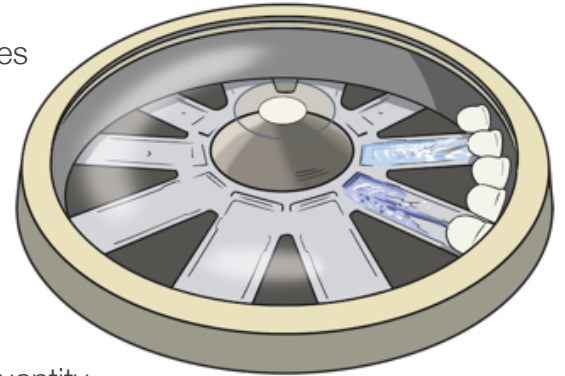




Dagatron Automatic Stainer

The Injection Method

Common to all of the innovative, fully automatic staining devices from Dagatron is the injection method. The injection method reliably prevents from sample carry-over and cross-contamination due to the horizontal, individually stored arrangement of the preparations in the device and ensures a consistent, uniform staining result for the complete preparation.



The staining solution is evenly applied in the required reagent quantity through the injection heads for each staining solution by means of microprocessor control in order to obtain standardized, repeatable results without loss of sample material.

Versatile Stainers from Dagatron

Single Stainers

AT-2000Z AFB Auto Stainer (**Ziehl-Neelsen**)

AT-2000K AFB Auto Stainer (**Kinyoun**)

AT-2000F AFB Auto Stainer (**Fluorochrome**)

AT-2000G **GRAM** Auto Stainer

AT-2000H **Hematology** Auto Stainer

Combi Stainers

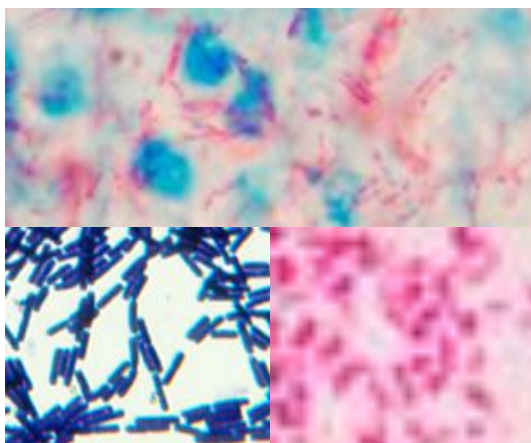
AT-3002 **GRAM/Ziehl-Neelsen** Dual Stainer

AT-3003 **GRAM/Fluorochrome** Dual Stainer

AT-3004 **GRAM/MGG** Dual Stainer

AT-3001 AFB Multi Stainer
(**Ziehl-Neelsen, Kinyoun, Fluorochrome**)

AT-2000I **INDIVIDUAL** Stainer as requested



WHO-compliant Staining for Bacteriology

The WHO-compliant staining for acid fast bacteria (Acid fast bacilli, AFB, Mycobacteria) can be performed as **fluorescence staining**, as cold staining according to **Kinyoun**, or, with the aid of the **patented, innovative heating system**, as hot staining according to **Ziehl-Neelsen**, depending on the instrument.

For Gram staining of bacteria, optimal results can be achieved with the corresponding Gram staining set with 4 coordinated solutions.

Dagatron Automatic Stainer

The Self-cleaning System

The self-cleaning program of the stainer can be used after a successful staining. The staining tables for each slide are rinsed and liquids are removed subsequently by centrifugation.

Due to the size of the injection heads with a nozzle opening of 2.0 mm, the frequent clogging of the nozzle by staining solutions, which occurs in the spray process, can be excluded. The injection nozzles are designed and mounted so that they are easily accessible for cleaning and can be simply cleaned together with the pump and valve.



Hematological Stains

The AT-2000H hematological stainer, which has been specially adapted for the examination of blood samples, and the AT-3004 dual stainer, which enables hematological staining and Gram staining in parallel, are ideally suited for hematological laboratory.

Both devices are suitable for performing the May Grünwald - Giemsa (MGG) or Pappenheim staining of blood smears in a standardized, fast and economical manner with consistent staining quality for counting leukocytes (WBC) and erythrocytes (RBC) and for assessing the morphology of leukocytes, erythrocytes and platelets (blood platelets). The 4 BIOMED Hemafix® staining solutions for Pappenheim's staining are ideally suited for this purpose.



Equipment and Accessories

A carbon filter on the ventilation fan minimizes the escape of hazardous gases. A supplementary slide carousel for up to 20 slides for cold staining is available. Filters on the feed hoses prevent the formation of artefacts.

Dimensions:

- 480 (W) x 445 (D) x 265 (H) mm
- Clear height with open lid: max. 565 mm
- Total weight approx. 20 kg