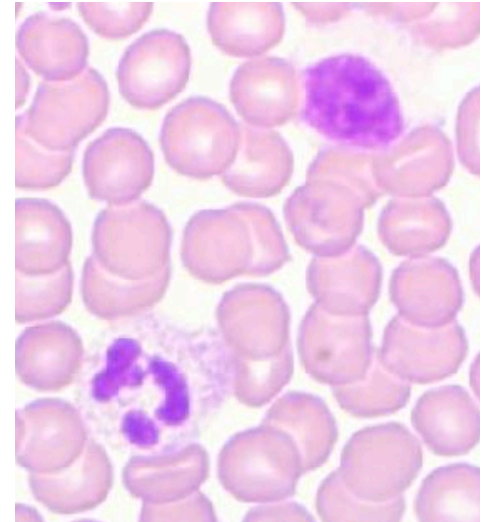


Standardized Staining Solutions

Hemafix® – Fast staining modified according to Pappenheim

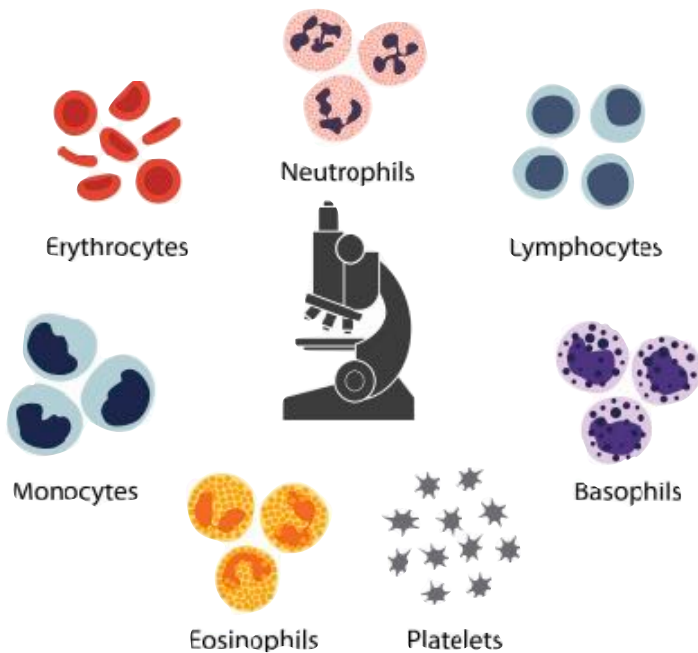
The Hemafix® staining solutions for fast staining combine the result from standard method **Pappenheim's staining** with the time saving advantage of a **fast staining method** for blood and bone marrow preparations for a conclusive overview.

- Reproducible and consistent staining results
- Very short staining time (30 seconds up to 2 minutes)
- Clean working and economical



Hemafix® – Panoptic staining according to Pappenheim

The fast and panchromatic **combined May-Grünwald - Giemsa staining** is the recommended method for differentiating cell types according to their basophil, neutrophilic and eosinophil structures.



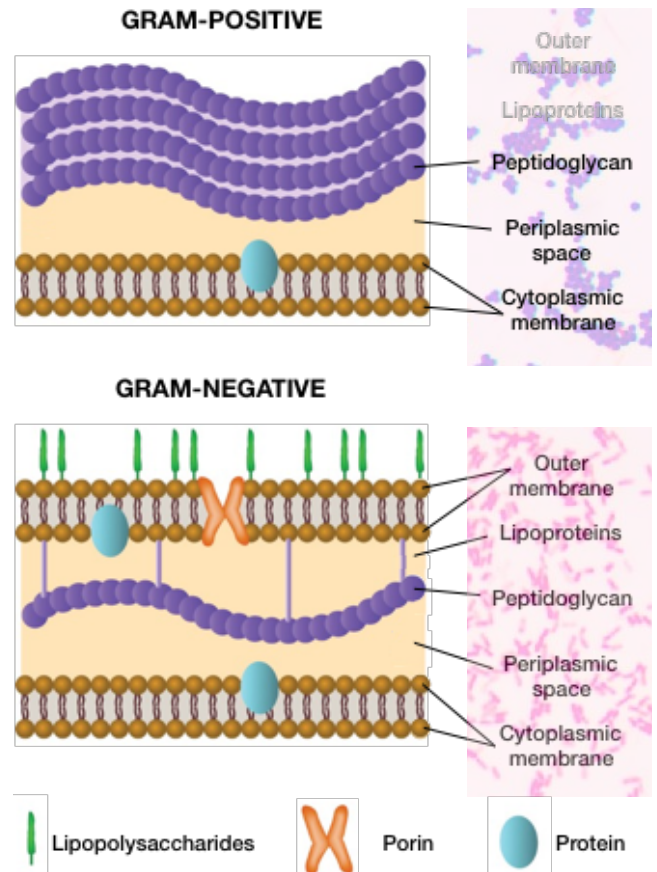
The Hemafix® staining solutions for Pappenheim staining can be used for air-dried microscope preparations for cytological and hematological diagnostics, manually as well as with an automated staining device. The clinical interpretation of every histological staining is based on the appearance and the staining result and thus the morphology of the tissue structures. Appropriate controls should be added and evaluated within the context of the patient's clinical history and other diagnostic tests by a qualified pathologist.

Standardized Staining Solutions - Bacteriology

Gramyfix – Differential staining for bacteria

The Gramyfix staining solutions are used to distinguish between **gram-positive** and **gram-negative** bacteria. Gram-positive bacteria are stained blue-violet by dipping in Gramyfix Blau (blue) and subsequent complexation with Gramyfix Iod (iodine). The multilayer cell wall of peptidoglycan retains the primary stain complex so that the cell cannot be decolorized by Gramyfix Entfärbung (decolorization). Gram-negative bacteria only have a single-layer peptidoglycan cell wall that allows the crystal violet to wash out on addition of Gramyfix Entfärbung so the following counterstaining with Gramyfix Rot (red) is visible.

The ready-to-use BIOMED Gram staining solutions ensure reliable staining results within a few minutes and are characterized by easy handling.



Overview of the BIOMED staining solutions

Hemafix® – Fast staining:

Hemafix® Fixierlösung (Fixing solution)

Hemafix® Rot (Eosinophil)

Hemafix® Blau (Basophil)



Hemafix® – Staining for Pappenheim

Hemafix® Fixierlösung (Fixing solution)

Hemafix® May-Grünwald

Hemafix® Giemsa

Hemafix® Puffer pH 7.2

Gramyfix:

Gramyfix Blau (Crystal violet)

Gramyfix Iod (Lugol)

Gramyfix Entfärbung

Gramyfix Rot (Fuchsin)