



POC diagnostics using our BIOspeed Analyzer

Test quickly, early and on site

The need to make diagnoses quickly, early and, if possible, at the point of action - the so-called "**point of care**" (POC) - became apparent early in the history of medicine. Decentralized, near-patient laboratory diagnostics originally emerged in the hospital in life-threatening emergency situations. It was developed due to the need for rapid decision criteria. In the meantime, the advantages are used in the outpatient area, the emergency room, in ambulances, in doctors' offices or pharmacies.



POCT has established itself as a helpful, additional tool for patient care without replacing conventional laboratory diagnostics.



Advantages of immediate diagnostics close to the patient:

- Reliable results in laboratory diagnostic quality by **Time-Resolved Fluorescence (TRF) immunoassay**
- Short turnaround time between test request and receipt of results
- Reduced waiting times for patients
- Improvement and acceleration of organizational processes
- Improving the quality of care for the patient

Parameters of the POC BIOspeed Single/Multi Analyzer test palette:

- **Cardiac markers:** cTnI | NT-proBNP | D-dimer | CK-MB | Myoglobin
- **Diabetes markers:** HbA_{1c}
- **Inflammatory markers:** PCT | IL-6 | Ferritin | hsCRP & CRP | SAA
- **Vitamin diagnostics:** 25-OH-VD
- **Sex hormones:** beta-HCG | PRL | PROG | LH | AMH | FSH
- **Thyroid hormones:** T3 | T4 | FT3 | FT4 | TSH

The test range is constantly being extended.

Technical specifications of the BIOspeed Immunoassay Analyzer

Measurement principle	<i>Time-resolved Fluorescence (TRF) Immunoassay</i>
Sample material	Whole blood - serum - plasma - capillary blood - urine - stool - nasal swab - deep sputum
Dimensions Single / Multi	BIOspeed Single 245 x 270 x 160 mm / BIOspeed Multi 300 x 220 x 148 mm
Weight Single / Multi	BIOspeed Single 2 kg / BIOspeed Multi 3 kg
Voltage	AC 220 V
Temperature / Humidity	+5 °C bis +40 °C / 10-80 %
Storage	50.000 Results
Speed	100 - 200 T/h (10 s per measurement)
System	Android
Display	8-Inch-colordisplay with touch screen
Test coding	QR code for unique identification
Interfaces / Communication protocol	Serial Port, USB, WLAN / TCP,UDP
Data output / printer	LIS (export as CSV file) / built-in thermal printer
Location conditions	Dry, clean, flat, protected from sunlight, without mechanical vibration, without electromagnetic interference.

Independent **quality controls** are available on request for the individual parameters.

- ✓ Results after 3 - 15 minutes in standard mode
- ✓ The relative deviation of the test kit accuracy is within ± 15 %.
- ✓ Precision of tests (within-run and between-run): CV <15 %
- ✓ Very high sensitivity
- ✓ Self-calibration
- ✓ High flexibility and easy to use
- ✓ Wide range of tests
- ✓ Ready-to-use sample preparation kits
- ✓ Test kits shelf life 24 months, storage temperature 2 - 30 °C
- ✓ LIS/HIS connection
- ✓ External quality controls available for each parameter
- ✓ Low maintenance requirements

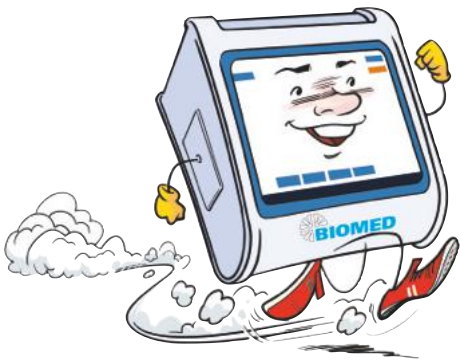
All benefits at a glance





The POC BIOSpeed Analyzer is also available as a **multichannel device:**

- Evaluates up to **6 patient samples** at a time
- For example, 6 different parameters **of a patient** can be evaluated at the same time or 6 patient samples from **different** patients can be evaluated
- Time saving due to multiple evaluation



Request a trial order now at <https://www.biomed.de/en/contact/>

Test our "Speedy" without **obligation:**

- Test our BIOSpeed Analyzer on your own premises for up to **two weeks** without any obligation.
- For the test phase you get **50% discount** on your desired five parameters. You can order half kits and on request also single test cassettes.
- Choose between online or on-site training
- We offer you telephone and personal product support during the test phase

Watch "Speedy" in action:

<https://www.biomed.de/en/products/point-of-care-poc-diagnostic/poc-analyzer-eng/>

For even more effective and efficient use of the BIOSpeed Analyzer, we recommend our instrument-independent accessories for laboratory use:

- Fully autoclavable micropipettes incl. pipette tips and pipette stands.
- Drying bath / heating block
- User-friendly centrifuges

All information about accessories can be found on our website at:

<https://www.biomed.de/en/products/laboratory-supplies/>

